

LED Linear Light Installation Instructions

Distinguish customer,

Thanks for purchasing our LED product. please read and follow all instructions carefully before using the product.

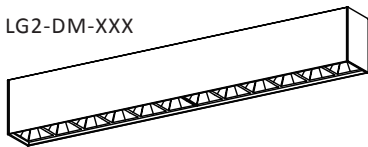
NOTES:

- ◇ Indoor use only.
- ◇ Avoid falling.
- ◇ If in doubt consult a qualified electrician. Do not disassemble it at your own discretion.
- ◇ Under no circumstances can the lighting fixture be covered with heat insulation gasket or similar materials.
- ◇ The maximum connection of each input line is less than 900W.
- ◇ The light source of this luminaires is not replaceable: when the light source reaches its end of life, the LED module shall be replaced.

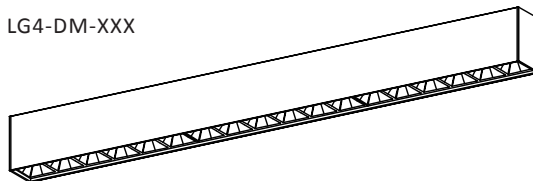
SPECIFICATION:

Model	Power	Input Voltage	Dimming	Efficiency	Beam Angle	Working Temperature	Dimensions	Weight
LG2-DM-XXX	19W	AC100-277V,50/60Hz	0-10V	80 lm/W	36°	-10—40℃	L605*W59.4*H88mm	1.65Kg
LG4-DM-XXX	38W	AC100-277V,50/60Hz	0-10V	80 lm/W	36°	-10—40℃	L1205*W59.4*H88mm	3.1Kg

LG2-DM-XXX

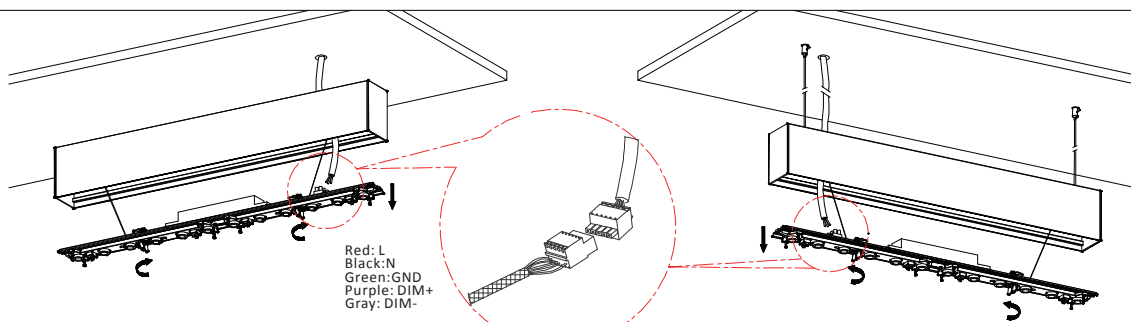
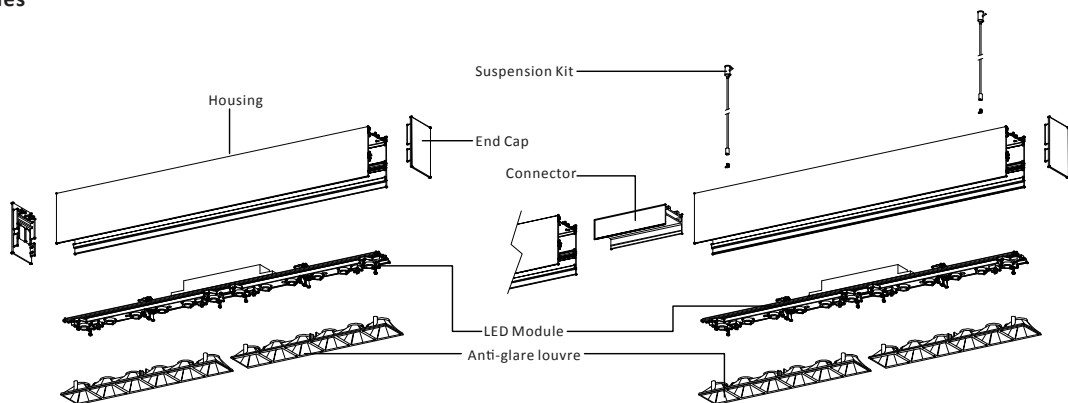


LG4-DM-XXX



INSTALLATION:

Accessories

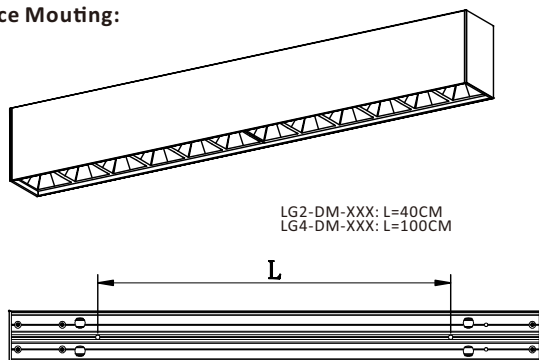




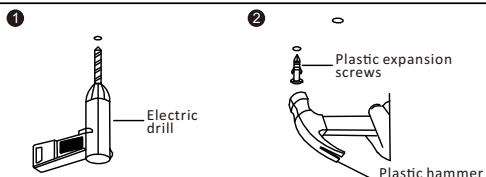
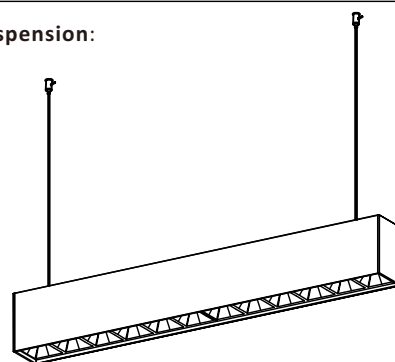
WARNING!

Please cut off the power before installation!

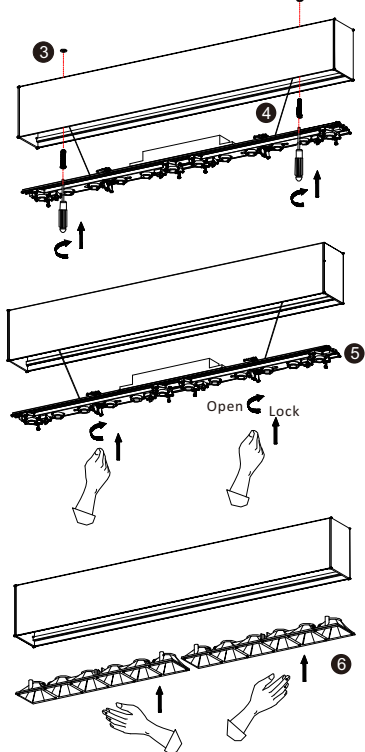
A. Surface Mounting:



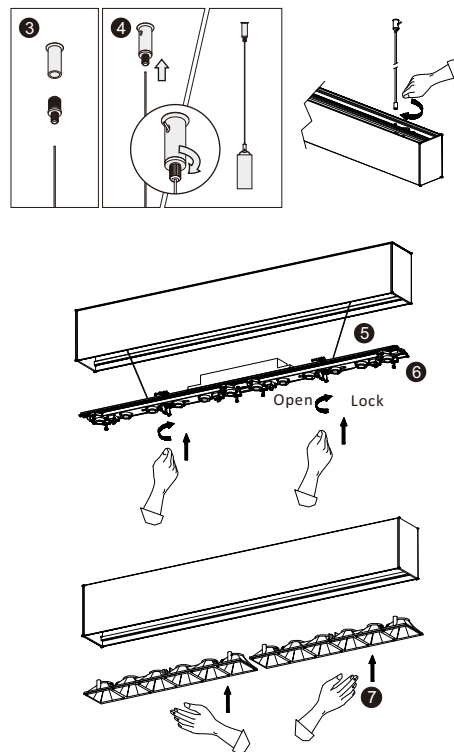
B. Suspension:



1. Drill a hole in the ceiling by electric drill (aperture 5 mm).
2. hammer the plastic expansion screws into the holes by plastic hammer.

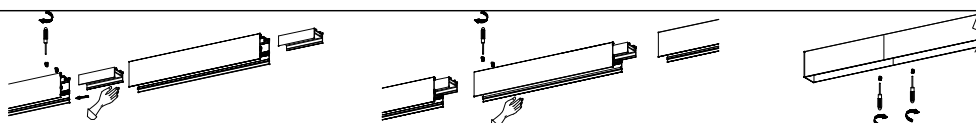


3. Use cross tapping screw (2XPA4*30) to fix the housing on the ceiling.
4. To fasten the safety rope step.
5. Push the LED module inside the housing, using the lock-twist device by 90 degree to fix the LED module.
6. Make the feet on anti-glare louvre correspond to the LED module's. Press the anti-glare louvre down 2.5-3.5mm by hand, the rebound device will lock the anti-glare louvre.



3. Screw auto safety lock into ceiling canopy and feed suspension wire through. Secure by tightening screw lock.
4. Suspend luminaire to required height by adjusting length of suspension wire. Trim excess suspension wire at safety lock.
5. To fasten the safety rope.
6. Push the LED module inside the housing, using the lock-twist device by 90 degree to fix the LED module.
7. Make the feet on anti-glare louvre correspond to the LED module's. Press the anti-glare louvre down 2.5-3.5mm by hand, the rebound device will lock the anti-glare louvre.

CONNECT INSTALLATION:



1. Push straight connector in the housing, make sure no gaps between the two housing and then lock it by 4x M4*6 screws from the back of the housing.
2. Lock it by 2x M4*20 screws from the front of the housing.

For 0-10V Dimming

For 0-10V Dimming Compatible with 0-10V dimmer

The driver PUR (D+) to the dimmer+(PUR), and the driver GRY (D-) to the dimmer-(GRY) Connect the wires with terminal cap as shown in wiring diagram (Figure 6). Incoming insulated dimming conductors shall have voltage rated at least equal to the branch voltage.

WIRING DIAGRAM

