

## INSTALLATION INSTRUCTIONS COMMERCIAL LED RETROFIT DOWNLIGHT

### IMPORTANT SAFETY INSTRUCTIONS.

1. Read all instructions completely before beginning. Keep these instructions in safe place for future reference.
2. To reduce risk of fire and over-heating, make sure all connections are tight.
3. Turn off the electrical power before proceeding.



### CAUTION: Risk of Fire or Electric Shock

LED Retrofit Kit installation requires knowledge of luminaire electrical systems. If not qualified, do not attempt installation. Contact a qualified person.

**WARNING - Risk of fire or electric shock.** LED Retrofit Kit installation requires knowledge of luminaire electrical systems. If not qualified, do not attempt installation. Contact a qualified electrician.

**ATTENTION : Risque d'incendie ou de choc électrique.** L'installation des systèmes d'éclairage LED nécessite des connaissances dans les systèmes électriques. Si vous n'êtes pas qualifiés, ne tentez pas une installation par vous même. Dans ce cas, contactez un électricien qualifié.

**WARNING – Risk of fire or electric shock.** Install these kits only in the luminaire that has the construction features and dimensions shown in the photographs and/or drawings.

**ATTENTION : Risque d'incendie ou de choc électrique.** Respectez les caractéristiques et dimensions des systèmes d'éclairage lors de leurs installations. Les informations relatives aux caractéristiques techniques et dimensions sont présentes dans les fiches techniques et/ou schémas et/ou photographies.

**WARNING – To prevent wiring damage or abrasion, do not expose wiring to edges of sheet metal or other sharp objects.**

**ATTENTION : Afin d'éviter d'endommager l'installation électrique des systèmes d'éclairage, veillez à ne pas positionner les câblages électriques en contact avec les cadres métalliques des systèmes d'éclairage et tout autre objet pointu.**

Do not make or alter any open holes in an enclosure of wiring or electrical components during kit installation.

*Ne pas apporter de modification sur les dimensions du boîtier de logement du système d'éclairage et ne pas faire de modification des composants électriques pendant l'installation du système.*

### A TYPE Retrofit Kit Contents:

- 1.Engine (including:a. sink heat with light source  
b.reflector c.housing)
- 2.LED Driver Box
- 3.User manual
- 4.E26 Kits(For replacement lighting of 120v voltage with E26 holdbase)
5. CLIPS 3PCS
6. Lable

### B TYPE Retrofit Kit Contents:

- 1.Engine (only sink heat with light source)
- 2.LED Driver Box
- 3.User manual
- 4.E26 Kits(For replacement lighting of 120v voltage with E26 holdbase)
5. CLIPS 3PCS
6. Reflector
7. Housing
8. Lable

### Housing Compatibility:

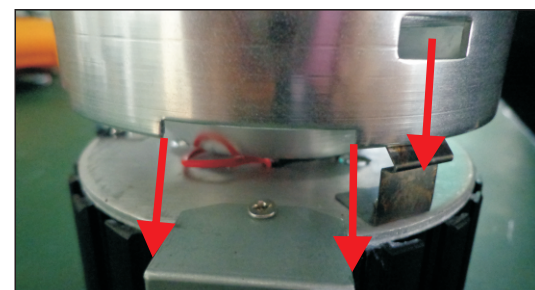
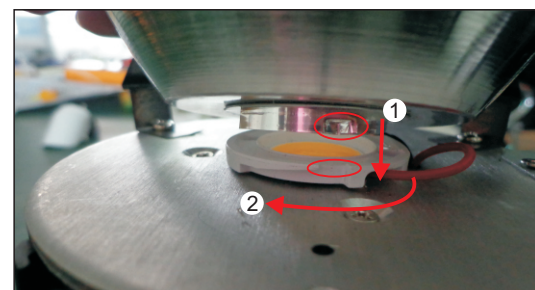
4 fits 4" min. to 4.7" max. mounting frame diameters (For models C4-14W-XXX, C4-D27W-XXX, C4-A14W-XXX, C4-A27W-XXX)  
 6 fits 6" min. to 6.7" max. mounting frame diameters (For models C6-A18W-XXX, C6-A27W-XXX, C6-D18W-XXX, C6-D23W-XXX, C6-D27W-XXX)  
 8 fits 7.7" min. to 8.4" max. mounting frame diameters (For models C8-A18W-XXX, C8-A27W-XXX, C8-A40W-XXX, C8-A54W-XXX, C8-D18W-XXX, C8-D23W-XXX, C8-D27W-XXX, C8-D33W-XXX, C8-D40W-XXX, C8-D54W-XXX)  
 10 fits 10" min. to 10.7" max. mounting frame diameters(For models C10-A54W-XXX, C10-A40W-XXX, C10-D40W-XXX, C10-D54W-XXX)

**Noted:Please help to use the frame with the diameter of metal lampholder cap is 70-90mm by 85mm high.**

Junction box to be located 1 inches minimum

### If B type retrofit kit should need increase installation

- 1.Concavity at the bottom of the reflector into the white ring gap, clockwise rotation of the reflector
- 2.Gap of housing snap to the boundary of the metal plate. Housing envelop three spring sheet. Press the housing down to three spring sheet pop-up



## INSTALLATION INSTRUCTIONS COMMERCIAL LED RETROFIT DOWNLIGHT

### CFL or HID to LED

**NOTE: RETROFIT KIT IS VOLTAGE SPECIFIC. VERIFY PROPER VOLTAGE BEFORE INSTALLATION.**

**Step 1:** Remove existing lamp(s).

**Step 2:** Remove and discard existing reflector.

**Step 3:** Open board of side of J-box.

**Step 4:** See 4A and 4B Locate J-box containing supply wires and cut all supply wires leading to the ballast and output lead of ballast. (May remove wires of ballast )

**Step 5:** Twist out conduit knockout.

**Step 6:** Place LED Driver box thru ceiling cut-out and allow to rest on ceiling.

**Step 7:** Install the supply conduit of Driver Box into the junction box.

**Step 8:** Connect the supply to the LED Driver. Connect GND to wire of green.

**Step 9 :** See figure 9, hold the end of the string and pass through the hole on one side of the fixture .press a while penetrate though the hole inside, and make it tighten. (please clarify where the wire is tightened and the tool is not described)

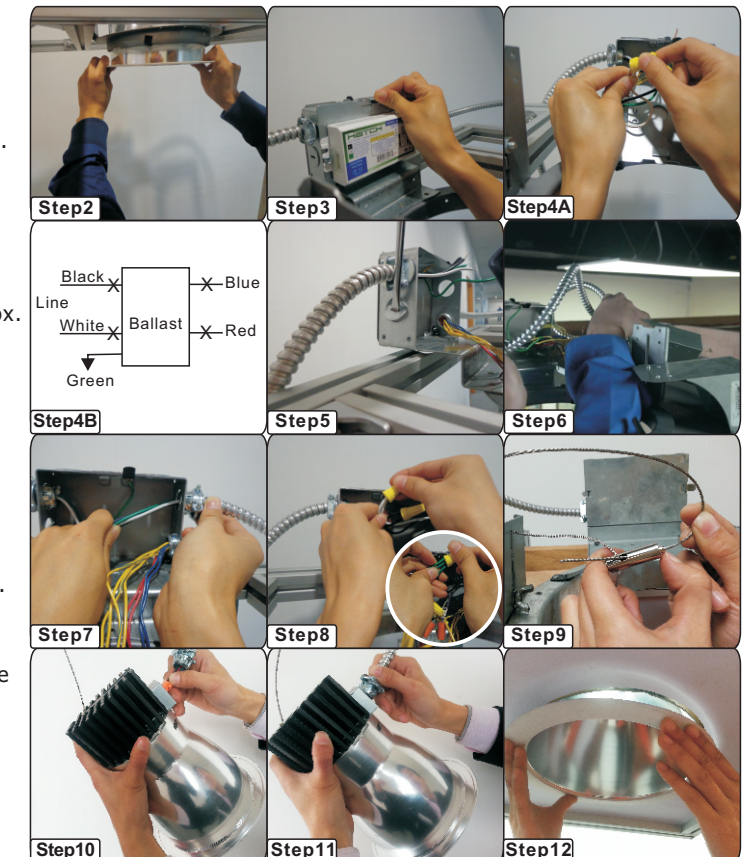
**Step 10:** Plug the yellow connector of new LED engine to the yellow connector on the end of the flex conduit provided on the driver box.

**Step 11:** Plug the connector of metal to hole of LED engine.

**Step 12:** Ensure the mounting frame can hold the weight of the whole reflector.

**Step 13:** Restore power after installation of fixture is completed.

**Step 14:** After modification completed, attach the Lamping Replacement Marking Label and Cautionary Label which provided with the retrofit kit package to the light fixture. The labels shall be visible during relamping, and after installation



### 120v voltage lamp with E26 holdbase to led

**Note :Voltage must be 120v at socket,**

**Step 1:** Remove existing lamp(s).

**Step 2:** Remove and discard existing reflector.

**Step 3:** Screw E26 to holdbase.

**Step 4:** Connect yellow plug ,wire into slot of holdbase ,Place LED Driver box thru ceiling cut-out and allow to rest on ceiling.

**Step 5:** Cover holdbase by cap.

**Step 6:** Place holdbase box thru ceiling.

**Step 7 :** Hold the end of the string and pass through the hole on one side of the fixture .press a while penetrate though the hole inside, and make it tighten. (please clarify where the wire is tightened and the tool is not described)

**Step 8:** Plug the yellow connector of new LED engine to the yellow connector on the end of the flex conduit provided on the driver box.

**Step 9:** Plug the connector of metal to hole of LED engine.

**Step 10:** Ensure the mounting frame can hold the weight of the whole reflector.

**Step 11:** Restore power after installation of fixture is completed.

**Step 12:** After modification completed, attach the Lamping Replacement Marking Label and Cautionary Label which provided with the retrofit kit package to the light fixture. The labels shall be visible during relamping, and after installation.

